

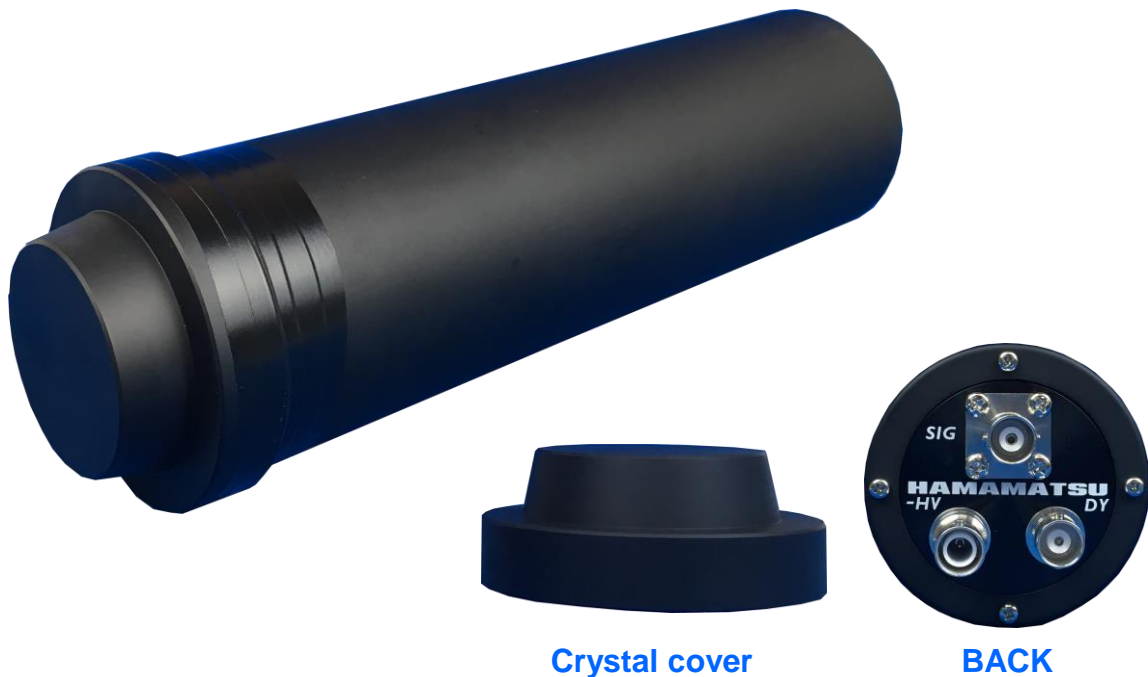
Overview

BaF₂ (barium fluoride) scintillation detectors have the characteristics of **short luminescence response time and decay time** in the radiation measurement field.

It has been used to measure event times such as ps (picoseconds) and ns (nanoseconds).

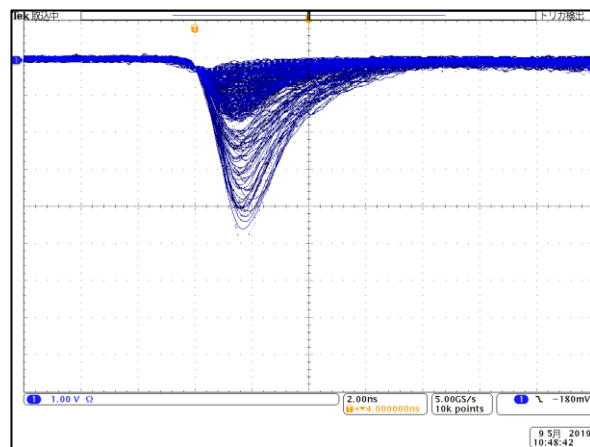
This detector uses a large BaF₂ crystal to improve detection efficiency.

Ideal for applications such as **positron annihilation lifetime measurement**.



Specifications

Crystal	BaF ₂ Scintillator, Conical shape
Crystal size	Φ 46 x Φ 40 x 15 (mm)
Time resolution	< 190 ps Typically
Deliquescent	No
Reflective material	Equipped
Crystal cover	Material: Aluminum (anodic oxide coating) Thickness: about 0.5 mm Weight: 24 g (CP464015)
PMT	H3378-51 (Hamamatsu Photonics K K) SHV connector for -HV *Recommend Input High Voltage: -3000 V or less BNC connector for SIG (anode output) BNC connector for DY (dynode output)
Dimension	Φ 64 × 240 (mm) Included connectors
Weight	684 g



Screenshot of the signal

*Images is for illustration purpose.

*Please note that contents may change without prior notice.

