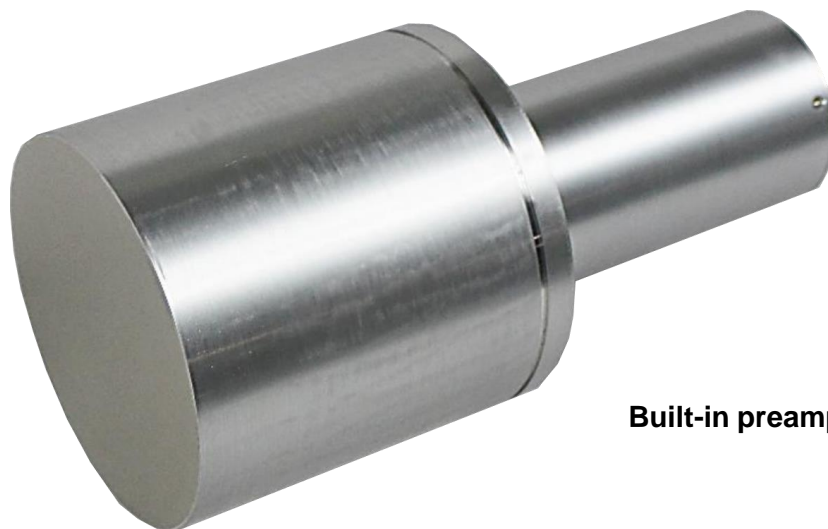


## XC700

CsI(Tl) scintillation detectors are used in radiation measurement detectors because of their high crystal density, and It has high detection efficiency and is used in a wide range of applications.

The XC700 uses **large CsI(Tl) crystals, 70 x 70 x 70 mm** to further improve detection efficiency.



Built-in preamplifier

### Specifications

<b>Crystal</b>	CsI(Tl) scintillator 70 x 70 x 70 mm
<b>Resolution</b>	7% @ 662 keV peak of Cs-137
<b>Connectors</b>	SHV connector BNC connector D-sub 9P connector
<b>Material properties</b>	Aluminum (Al)
<b>Dimensions</b>	Diameter 110 × 230 mm
<b>Weight</b>	2.6 kg
<b>Condition</b>	Operating temperature 0 to 40 degree, no condensation
<b>Accessories</b>	2 M cable (1 each of SHV, BNC, and D-sub9) Test and Inspection Report

\*Images is for illustration purpose.

\*Please note that contents may change without prior notice.

